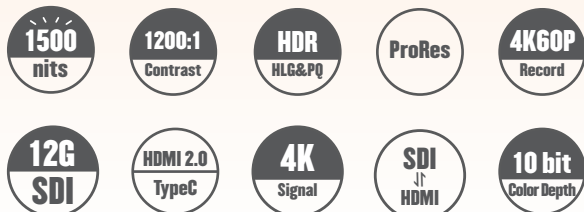


A7S

7 INCH 4K HDR

Recording Monitor



INTRODUCTION

A7S is a versatile 7-inch on-camera monitor that integrates monitoring, recording, and playback functions. It features an IPS touch screen and 1500 nits of high brightness and can be applied to mirrorless, cameras, professional video cameras, pan/tilts, jibs, and other equipment. It supports 4K HDR monitoring and 4K60P Apple ProRes format recording. A7S has 12 G-SDI and HDMI input and output interfaces, which can realize HDMI and SDI cross conversion. It has built-in waveforms, false color, focus assist, and other image analysis tools. A7S can empower video bloggers, creative workers, and photographers in the applications of television/short drama production, TV drama location shooting, commercial filming, new media, and other fields.

HIGHLIGHTS

- 1x12G-SDI & 1xHDMI inputs and outputs, 1x Type-C input
- 2x12G-SDI outputs in play mode and HDMI input
- 12G-SDI to HDMI 2.0 cross conversion
- 3D Lut color calibration by main stream softwares of ColourSpace & Calman
- color spaces: Rec. 709/EBU/DCI-P3/DCI-P3 D65/Rec.2020
- HDR support: HLG(1.03/1.11/1.16/1.20/1.27/1.33), ST2084 PQ/(softroll)
- Gamma options: Gamma2.0/2.2/2.4/2.6
- 4K HDR monitoring, custom LUT files loading
- Support upto 4K60P ProRes record at HQ/422/LT/Proxy format
- Versatile record functions: pre-roll Record, Segmented recording, interruption re-recording, scheduled recording, time-lapse photography, etc
- Support ExFAT file system, customize the recording file name recorded in hard-drive
- Support full list review or custom playlist review
- Enable frame-by-frame, fast play, slow play, loop play, and other operations
- During shooting or playback, the system supports marking fragments at specific times, with the ability to output to disk in XML format for direct use in later stages
- 4K -HD down-conversion, DCI gamut clipping output
- Screen flip/mirror/freeze/vector/waveform/histogram
- Zebra /False Color/Focus Assist/Blue Exposure

VIDEO RESOLUTION & FRAME RATE

4K DCI 4096×2160	23.98/24/25/29.97/30/50/59.94/60p
4K UHD 3840×2160	23.98/24/25/29.97/30/50/59.94/60p
2K DCI 2048×1080	23.98/24/25/29.97/30/50/59.94/60p
FHD 1920×1080 Progressive	23.98/24/25/29.97/30/50/59.94/60p
FHD 1920×1080 PsF	Pulldown recording and looped output of PsF
FHD 1920×1080 Interlaced	50/59.94/60i
1280×720p	50/59.94/60p

SPECIFICATION

Panel	
Model No.	A7S
Backlight	LED
Size	7"
Resolution	1920×1200
Aspect Ratio	16:10
Viewing Angle	178°(H) / 178°(V)
Brightness	1500cd/m ²
Contrast Ratio	1200:1
Color Depth	10bit
Input&Output	
2×BNC	12G/6G/3G/HD/SD-SDI (IN×1, OUT×1) SDI IN changed to SDI OUT in playmode or HDMI input
2×HDMI	HDMI 2.0 (IN×1, OUT×1)
1×Type-C	1×Type-C DP1.4 (IN×1)
Recording	
Record code	Apple ProRes HQ/422/LT/Proxy(MOV Wrapper), up to 4K60P
Pre-roll Record	Support (HD 10s, 4K 2s)
Time-lapse Photography	Support
Pulldown Record	Support, 2:2&3:2
Playback	
Full List Review	Full list review or custom playlist review
Play Operation	frame-by-frame, fast play, slow play, loop play, and other operations
Storage	
Sata Slot	Standard 2.5inch SSD SATA3.0 hard-drive
Audio Monitoring	
Audio In	3.5mm Headphone Jack 8-CH embedded audio, optional 2-CH out
Audio Out	3.5mm Headphone Jack, 1x1.5W Speaker Volume Adjustable
General	
Input Voltage	DC 12V
Power	25-36W
Install screw	1/4"-20 screw
Battery	Support NP-F battery, voltage:7.4V,dual-batteries
Net Weight	≈825g
Accessory	Power Cord

*Specifications may be changed without prior notice.

FEATURES

▪ Super-Bright & Large 7-inch Touch Screen

A7S adopts a 7-inch IPS touch LCD screen with a 1920×1200 FHD resolution, 10-bit high color depth, and 1500nits high brightness, enable it to display images plainly even in direct sunlight.



7" Touch Screen

FHD

1920×1200px



1200:1 Contrast



1500nits



10bit Color Depth



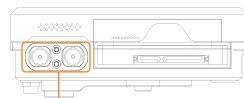
160° Viewing Angle

▪ SDI & HDMI Cross-Conversion

Equipped with 12G-SDI, HDMI2.0 and Type-C interfaces, it can realize the conversion between HDMI and SDI input and output signals, which can not only monitor the shooting screen in real time, but also transmit the signal back to the director's station, bringing many conveniences to the shooting work.



1 x HDMI2.0
input and loop-out



1 x 12G-SDI input & Loop-out
SDI IN can be used as SDI OUT
in playback mode or when HDMI input is used

▪ All Features Integration

Full integrated with HDR monitoring, synchronous recording, list playback, real-time marking and other functions into one machine, which simplifies the creative process and is suitable for all kinds of scenarios such as video shooting and live broadcast recording.

▪ Apple ProRes codec, up to 4K60P recording

It supports pre-roll recording/segment recording/resume recording after interruption/timed recording and other functions, and can record up to 4K60P 10bit 4:2:2 Apple ProRes format video (422HQ/422/LT/Proxy format), providing high-quality, low-compression video files that can retain more details and colors, and are more suitable for post-editing and processing.

▪ Multiple HDR/Color Spaces Available

Supports high dynamic range (HDR) monitoring, providing standard HDR EOTF (Electro-Optical Transfer Function) with built-in various standard color spaces and Gamma. It also supports VPID reading display and Payload ID recognition, automatically matching color space and EOTF.

- Color Spaces: Rec.709/EBU/DCI-P3/DCI-P3 D65/Rec.2020
- HDR EOTF: HLG (1.03/1.11/1.16/1.20/1.27/1.33) - ST2084 PQ/(softroll)
- Gamma: 2.0/2.2/2.4/2.6

▪ Customizable 3D LUT Import & Output

Users can load and save 8 custom 3D LUTs via USB port/network port, effectively simplifying the color grading process for DIT and post-production work.

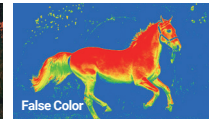
▪ 3D LUT Color Calibration

Tetrahedral 3D LUT interpolation color calibration technology. Compatible with ColourSpace and Calman calibration software, Konvision monitors apply K10-A/CR100 probe(professional level) to achieve a precise color. Monitor's also workable with universal colorimeters including CA210, CA310, CS200, CR100, CR250, X-Rite i1 Display.

▪ Professional Image Analysis Tools



Focus Assist
Outlines the focus area using a peak focus algorithm



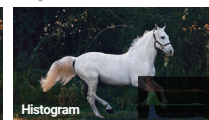
False Color
Applies brightness coloring to regions of the image based on various standards



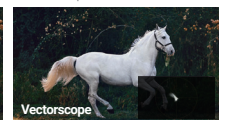
Zebra
Use zebra to mark areas where exposure exceeds the preset value



Waveform
Provides brightness information at different regions



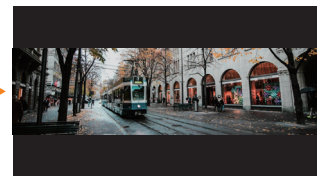
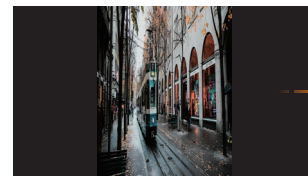
Histogram
Reflects the overall brightness levels of the image



Vectorscope
Displays detailed color distribution and differences within the image

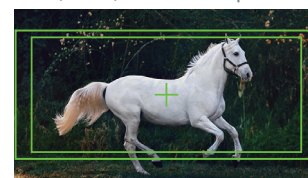
▪ Anamorphic De-squeeze

Allows you to de-squeeze images while viewing content shot with anamorphic lenses. The options include: 1.33x/1.5x/1.66x/1.8x/2x.

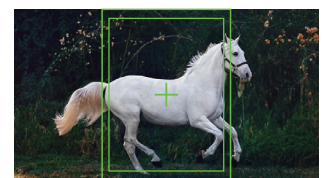


▪ Handy Composition Tool

It features tools such as center mark, aspect ratio mark, safe area, and nine grid. The image outside the designated region can be filled with gray, white, black, or semi-transparent.



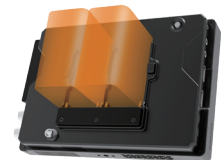
Horizontal aspect ratio marker and safety frame



Vertical aspect ratio marker and safety frame

▪ Dual Battery Slot

Dual NP-F battery slot, support hot swap, recording, monitoring without interruption. A DC interface is also reserved to cope with long-time working.



▪ Simple design, convenient operation

Anodized aluminum metal body, new touch UI, smooth operation, support for custom sorting of function shortcut keys, users can customize their own interface to suit their operating habits.

