

KVM-5550W

55 INCH

FHD Broadcast LCD Monitor



INTRODUCTION

KVM-5550W is a wall-mount broadcast monitor with a 55 inch 1920 × 1080 Full HD resolution, 178° H/V wide viewing angle IPS LCD panel. It also adopts a narrow frame design to effectively increase the screen-to-body ratio. It is equipped with dual-channel SDI inputs and loop outputs and multiple video interfaces, supports 2K signals and PBP/PIP display. KVM-5550W has built-in waveform, vectors as well as aspect ratio marker and other composition auxiliary tools. It is fully functional and extremely cost-effective, providing high-quality solutions for application scenarios such as spacious studios and large broadcast vehicles.

HIGHLIGHTS

- 1920×1080 FHD resolution, 178°H/V viewing angle, IPS LCD panel
- 12-bit video signal processing with zero delay display
- 2×2K/3G/HD/SD-SDI inputs&outputs
- 1×DVI-I input, compatible with HDMI/VGA conversion input
- 1×composite video input
- 3D LUT color calibration support for ColourSpace & Calman
- Support REC 709 color space
- PBP/PIP Display for 2xSDI/mixed signals
- PIP child window size adjustable and position swappable
- Interlaced to progressive, display original interlaced pictures
- Automatic recognition of color system PAL/NTSC
- Pixel measurement, simultaneous measurement of 32 pixels' color info for dimming
- Darkness check to brighten the picture's dark part for more details
- Picture flip/Zoom/Overscan/Underscan/H/V delay
- Waveform, Vectorscope, Histogram allowing to display one or all scopes
- False color, Zebra, Focus Assist, Blue only/Mono
- Markers: Aspect Ratio, Center Area, Safe Area, Box Frame Adjustment
- Each SDI input de-embedding 16-channel audio, optionally any 2-channel audio output, and audio phase diagram support
- Abnormal detection and alarm for no audio, EDH error, CRC error, etc.
- Time code (VITC1、VITC2、LTC)
- UMD/IMD display, TSL3.1/4.0/5.0 protocol
- Ethernet/GPI control, support RS422 input and output
- GPI remote control for tally, auxiliary functions, signal switching, etc
- Aluminum alloy case, speaker, headphone jack, tally
- 220V AC power input, supports power-off memory function

SPECIFICATION

Panel	
Model No.	KVM-5550W
Backlight	LED
Size	55"
Resolution	1920×1080
Aspect Ratio	16:9
Viewing Angle	178°(H) / 178°(V)
Brightness	450cd/m ²
Contrast Ratio	1300:1
Color Depth	10bit
Input	
2×BNC	3G/HD/SD-SDI
1×BNC	Video
1×DVI	DVI/VGA/HDMI
Output	
2×BNC	3G/HD/SD-SDI
Remote Interface	
1×RJ45	10/100M Ethernet Input Interface
1×RJ45	GPI Input Interface
2×RJ45	RS422 Input and Loop Out Interface
Audio In & Out	
Audio In	3.5mm Headset Jack 16-Channels SDI & 2-Channel outputs
Audio Out	3.5mm Headset Jack, 2×3.0W Speakers
Audio Meter	Vertical/horizontal display
General	
Input Voltage	AC 100-240V 50/60Hz
Power	≤130W
Installation	VESA MIS-D (400×400mm) / (400×600mm)
Net Weight	≈30kg
Accessory	Power Cord /Desktop Stand

*Specifications may be changed without prior notice.

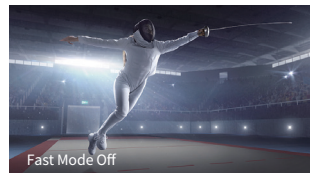
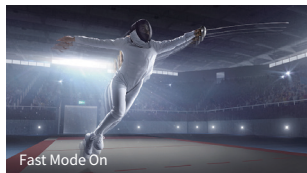
FEATURES

▪ FHD resolution, IPS LCD panel

Adopts 55 inch IPS LCD panel, 1920×1080 FHD resolution, 178° H/V wide viewing angle, presenting vivid images.

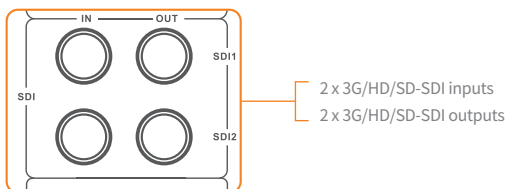
▪ Motion-Adaptive Interlace to Progressive

High-end video processing engine, motion-adaptive interlace to progressive. It realizes a quick response to the fast-moving image, avoids fuzzy, sawtooth, and other problems, and ensures a clearer and smoother image. It can satisfy more demanding applications such as live sports, camera shaking, and rolling subtitles, etc.



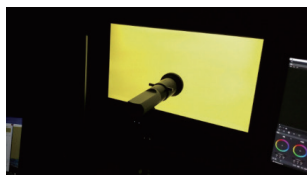
▪ SDI / Video / DVI Interfaces, Support 2K Signal

Equipped with 2 x 3G/HD/SD-SDI inputs and loop-out, video input, DVI input (convertible with HDMI/VGA), 2K signal support.



▪ 3D LUT Color Calibration

Tetrahedral 3D LUT interpolation color calibration technology. Compatible with ColourSpace and Calman calibration software, Konvision monitors apply K10-A/CR100 probe (professional level) to achieve a precise color. Monitor's also workable with universal colorimeters including CA210, CA310, CS200, CR100, CR250, X-Rite i1 Display.



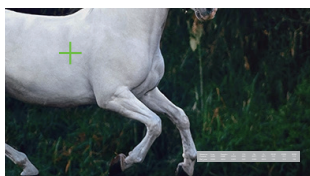
Calibration Software:



ColourSpace

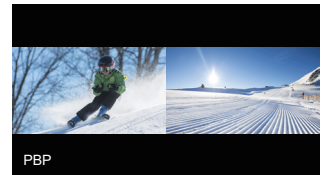
▪ Pixel Measurement

Measure the color information of pixels, supporting YcbCr, RGB 10BIT, XYZ, xyY coordinates. This function can be used to guide on-site light adjustment for shooting with precise light control requirements.



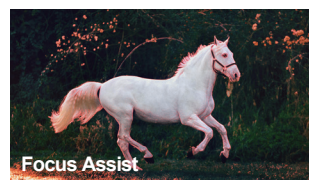
▪ PBP/PIP Display

The dual-image mode supports PBP/PIP display of dual-channel SDI signals or mixed signals, allowing user to check the images of different signal sources in real time on the same screen and switch easily.

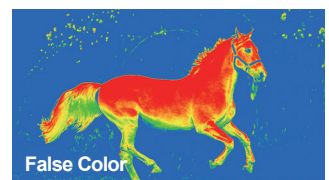


· In PIP mode, you can adjust the size of the sub-window and swap the positions of the two windows.

▪ Professional Image Analysis Tools



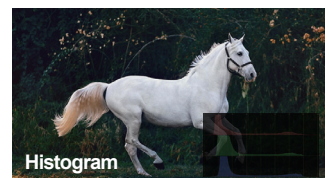
Outlines the focus area using a peak focus algorithm



Applies brightness coloring to regions of the image based on various standards



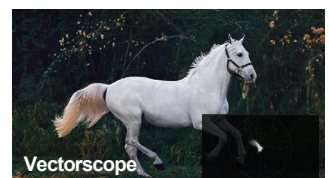
Use zebra to mark areas where exposure exceeds the preset value



Reflects the overall brightness levels of the image



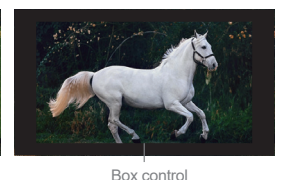
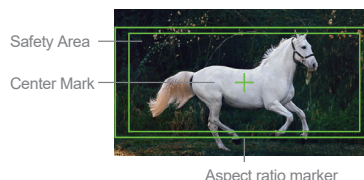
Provides brightness information at different regions



Displays detailed color distribution and differences within the image

▪ Versatile Composition Assistance Functions

It supports center mark and aspect ratio mark, provides multiple standard mark sizes and allows customization, can set the safety range synchronously, and supports BOX control adjustment.



▪ Audio Auxiliary Display

Supports 16-channel SDI, 2-channel HDMI audio meter display (VU & PPM), and optional 2-channel output through the 3.5mm headphone jack or speaker. The signal alarm will be triggered in an abnormal circumstance, such as no audio, high or low audio level, etc.

