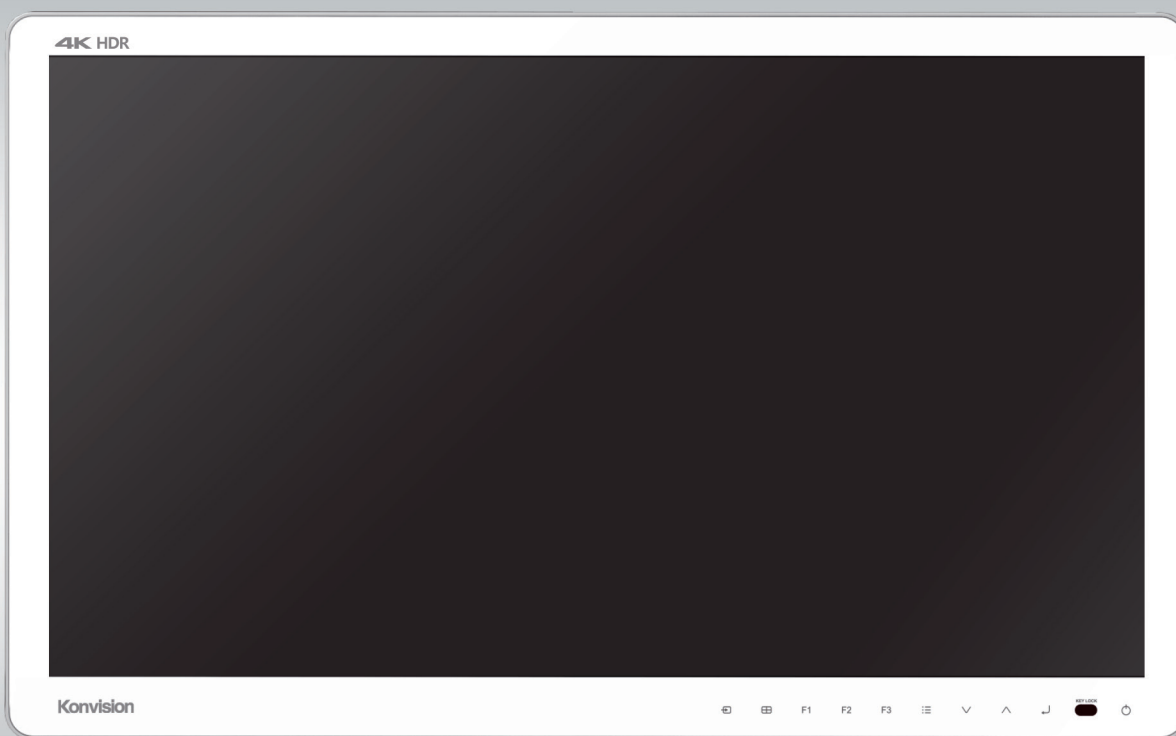


Konvision

Konvision Medical · Cherishing Every Life

32" 4K HDR Mini-LED Surgery Medical Display



4K UHD Display



Mini-LED Panel

Anti-reflective Glass



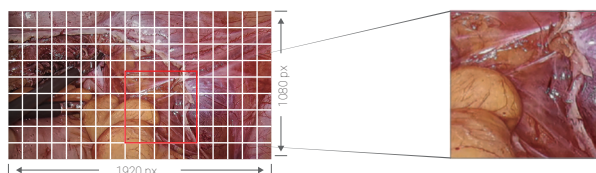
DC Output

Picture Quality

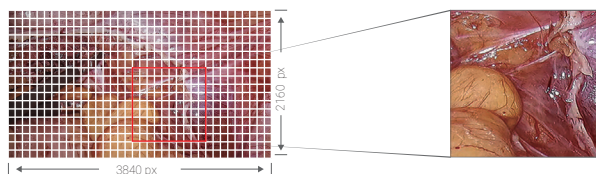
4K UHD Display

It is equipped with a 31.5-inch 4K resolution 10bit Mini-LED panel, offering four times the pixel density of FHD. Delivers finer details and clearer visuals, ideal for endoscopy, micro-surgery, and other medical scenarios.

FHD Monitors

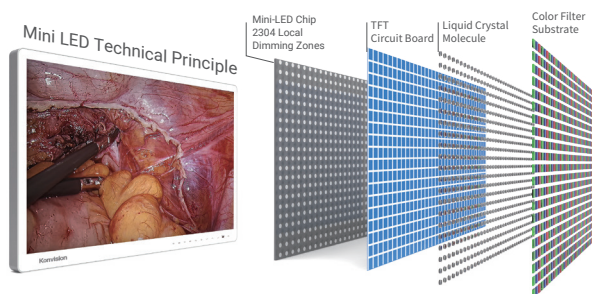


4K UHD Monitors



Local Dimming Delivers Precision Imaging

Equipped with Mini-LED Full Array Local Dimming technology, the MS-U3210M utilizes algorithmic precision to autonomously adjust brightness across 2304 independent zones based on screen content. This delivers uniform backlight distribution, achieving 1,000 nits peak brightness and a 1,000,000:1 contrast ratio – delivering richer details and optimized imaging for HDR (High Dynamic Range) content.



Clearly Reveal Light and Dark Details: With a contrast ratio of 1,000,000:1, the monitor delivers clear distinction between bright and dark areas, it highlights the depth and layering of the image/providing a strong sense of depth and dimension, which precisely aids medical personnel in identifying subtle changes and abnormalities in the image, which is beneficial for confirming the location of lesions.

Highly Restored True Colors: Complies with the ITU-R recommended BT.2020 color gamut standard, it is expanding the traditional HD Rec709 color gamut range by about 33%, covering more than 3/4 of visible colors, with a color depth of 1.07 billion, providing a broader range of red and green, and more truly presenting the subtle color differences of various structures under endoscopy.

Display Performance

Triple Image Enhancement Modes

Powered by Konvision Technology, three customizable modes enhance diagnostic clarity by dynamically tuning sharpness, contrast, brightness, and saturation:

Available modes:

Contour Enhancement: Sharpens structural boundaries for tissue delineation

Color Enhancement: Amplifies tonal differentiation for improved visual perception

Shadow Enhancement: Boosts visibility of low-luminance details

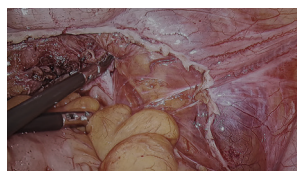


Image Enhancement Modes OFF

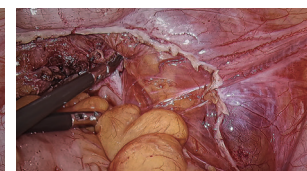
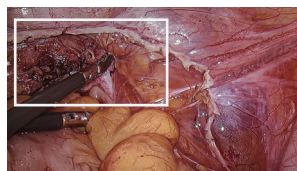


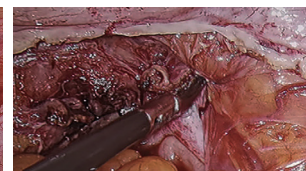
Image Enhancement Modes ON

Single-Screen Focus Magnification

Targeted Area Zoom allows magnification of specified regions, which ensures complete presentation of lesion details, empowering clinicians to extract actionable diagnostic information.



Select Focus Area

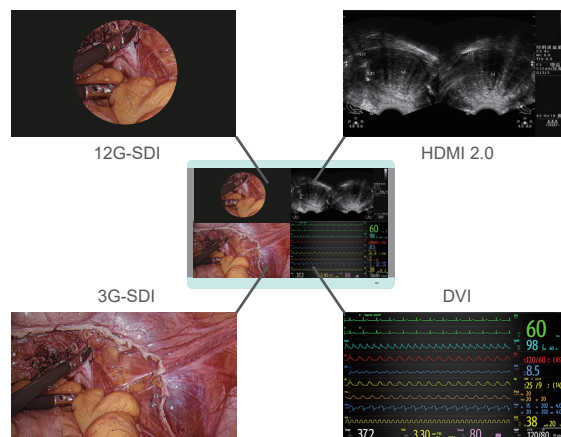


Focusing Effect

Simultaneous Quad-Screen Display

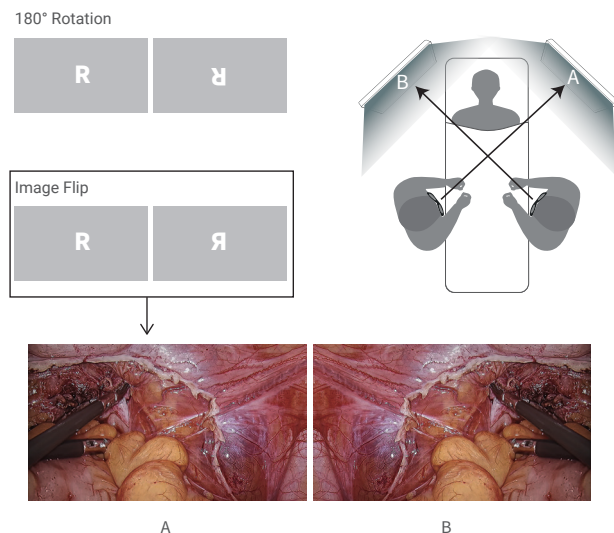
It supports input from multiple signal sources, allowing four images to be displayed simultaneously. It also enables real-time monitoring of patient vital signs or referencing additional imagery during endoscopic procedures.

Multiple images can be viewed on one screen



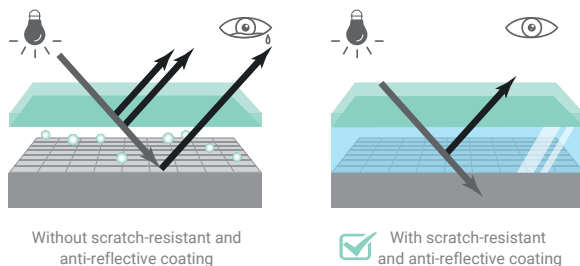
Optimal Viewing Angle

It provides consistent color and clarity from any viewing position, ensuring medical teams can access clear image and information from various angles. Supports 180° image rotation and left-right mirroring, enabling medical staff to adjust views for optimal visibility and comfort.



Anti-Reflective for Clear Viewing

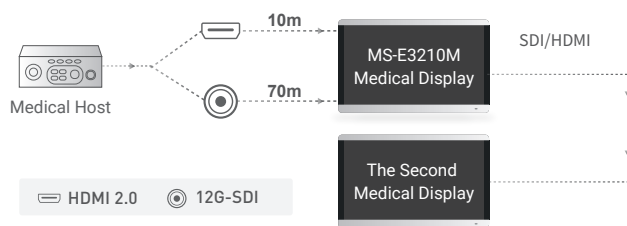
Features anti-reflective glass with excellent scratch resistance, minimizing glare and reflections in bright operating room lights, preventing interference with screen images and effectively alleviating eye fatigue.



Stable Transmission

Multiple Connectivity Options

It offers 12G-SDI, 3G-SDI, HDMI2.0, DVI, interfaces, compatible with 4K and 1080P signal p60/59.94/50/30/29.97/25/23.98 input and output, supporting composite signals, meeting various connection needs.



User Friendly Design

Anti-Contamination and Easy-to-Clean Design

The monitor's front features a full flat design with all-touch buttons, effectively avoid contamination, and is easy to clean and disinfect. IP55 protection level effectively deals with solid particle intrusion and liquid corrosion.

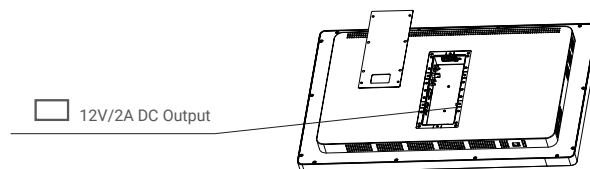


Effortless Cable Management

Downward-facing and recessed interface design with a cable box for organized wiring which can ensure a clean, safe, and hygienic surgical environment.

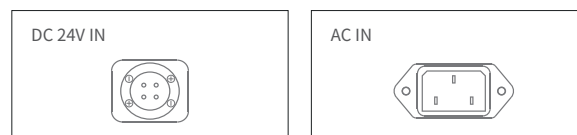
Stable DC Output

Includes a DC output port to power peripheral devices, reducing external power connections and simplifying equipment layout.



Dual Medical-grade Power Options

Dual medical-grade power supplies for safety backup; Ultra-quiet, eliminating noise interference. The built-in shielding circuit design effectively prevents interference from complex instruments such as high frequency electrosurgical equipment, which ensures the stability of the surgical display.



Standardized Installation

It supports VESA mounting standards (100×100mm, 200×100mm), allowing easy integration with towers and boom arms. Includes a DC output port for connecting endoscopic camera systems, reducing cable clutter for simplified operation and management.

Specification

32" 4K HDR Mini-LED Surgery Medical Display MS-E3210M

Image Performance

Panel	Mini-LED Panel
Panel Size	31.5"
Screen Ratio	16:9
Effective image Size	697.31×392.23 mm (H×V)
Resolution	3840×2160 (H×V)
Pixel Pitch	0.1816×0.1816mm
Backlight	Full Array 2304 Local Dimming Zones Backlight
Screen Protection	Anti-reflective glass
Viewing Angle	178° (H×V)
Brightness	1000cd/m ²
Contrast Ratio	1,000,000:1
Color Depth	10bit
Color Gamut	Bypass/Rec709/Rec2020
Gamma	Bypass/DICOM/2.0/2.2/2.4/2.6/HLG/User

Input/Output

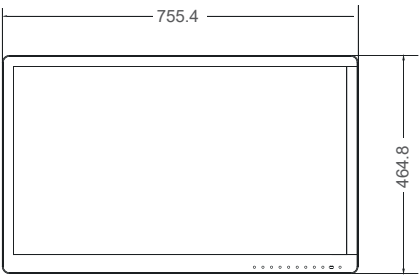
Input	12G/6G/3G/HD-SDI(×1)、3G/HD-SDI(×3)、HDMI2.0(×1)、DVI-D(×1)
Conversion output	12G/6G/3G/HD-SDI(×1), HDMI2.0(×1)
AC Input	AC Input(×1), 100V-240V
DC Input	DC Input(×1), DC 24V
DC Output	12V Output(×1), 2A

Other Information

Power Consumption	200W
Operating Humidity	30% to 85% (no condensation allowed)
Operating Temperature	0℃-40℃
Unit Weight	12.5±0.5kg
VESA Installation	100X100mm VESA
Accessory	Power cord, Desktop Stand
Certifications	CCC

Dimension (Unit: mm)

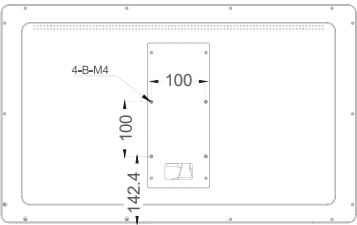
Front



Side



Rear (VESA Installation)



* Specifications may be changed without prior notice