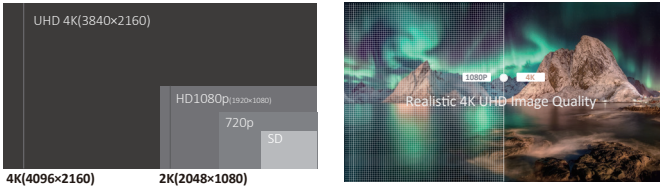


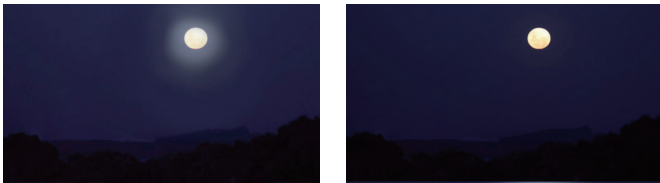
4K Signal, Native 4K Resolution

Native 4K resolution, 4K 12G-SDI single link supports utmost 4096 x 2160 60p format, 2 x 12G-SDI signal inputs and outputs (auto detected 6G/3G/HD/SD-SDI), 1xHDMI2.0 input, 1xSDI SFP+ module input cage.



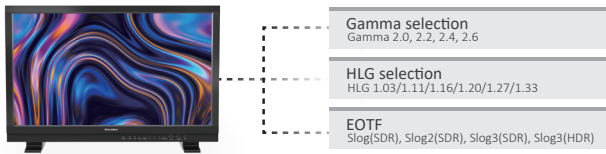
Unparalleled black level

Featuring a 1,000,000:1 contrast ratio with an absolute black of 0.0005 nit, OLED panel reproduces extreme black details, and brings a stunning experience.



EOTF Curve Conversions

Konvision KUM 4K, 8K and KVM-6X series supports a variety of EOTF curve conversion applicable to the broadcast industry and digital film standard. A preset of lots of camera logs and gamma curve selections, so as to realize the perfect combination with the camera system.

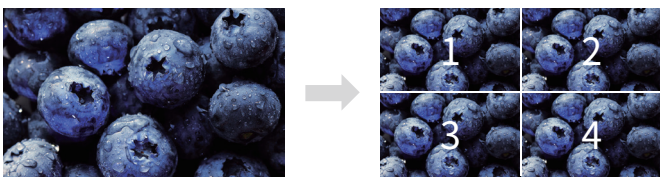


HDR Waveform, HDR Area Display

HDR reference white is 203nits. The part that exceeds the reference white level (203nits) considered as the HDR highlight part, and the HDR highlight ratio should not exceed 20% of the entire image. HDR waveform, HDR area display can make the HDR info more intuitively displayed, which is more convenient for users.



2SI and SQD 4K signal



4K 2 Sample Interleave (2SI) : Pixel based segmentation



4K Square Division (SQD) : Quadrant based segmentation

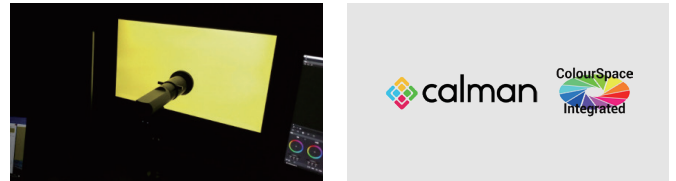
Fastest Response Time

The OLED panels' response time is only 0.1ms! Far exceeding the normal LCD, perfectly bids farewell to the phenomenon of trailing and jaggies of high-speed moving pictures. This rapid fast response benefits to the smooth fast-moving content, great for sports broadcasting.



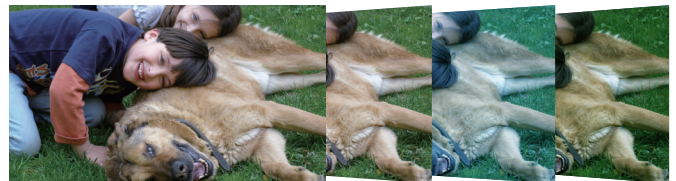
3D LUT Color Calibration

Compatible with ColourSpace and Calman calibration software, Konvision monitors apply K10-A probe(professional level) to achieve a precise color. Monitor's also workable with universal colorimeters including CA210, CA310, CS200, CR100, CR250, X-Rite i1 Display.



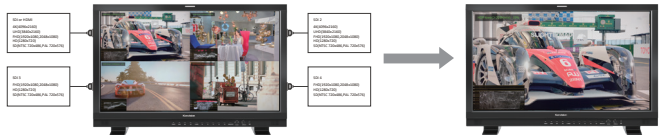
3D LUT files import

With the LUT loading function, users can load 2 different 3D LUT files with different color types according to their own needs, making DIT, post production and grading work simpler and more intuitive, optimizing the work flow and improving work efficiency.



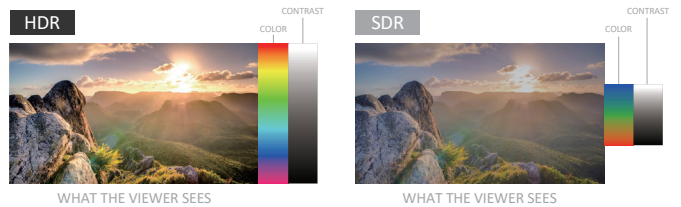
Quad View Mode

Quad View Mode support mixed inputs & frequency rates. Each window can change to single picture mode with shortcut button or GPI. Each windows can select different color space and HDR waveform.



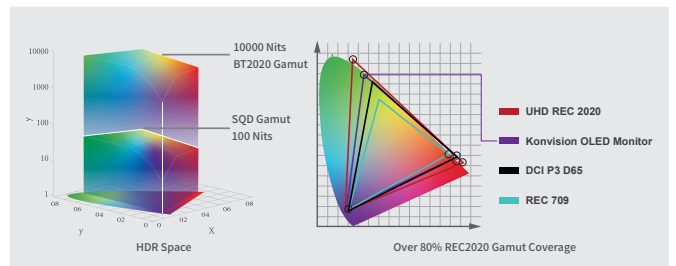
High Dynamic Range(HDR)

Konvision KUM 4K, 8K and KVM-6X series support HDR display. Adjustable HDR modes include PQ(ST2084), HLG with Rec 2020 color gamut. It reproduces a greater dynamic range of luminosity and provides extremely high level picture quality.



Super Wide Color Gamut

With 99% P3 and over 80% REC2020 gamut coverage, which offers a much more gorgeous picture quality. It's superb for HDR content due to its extreme contrast ratio and wide color gamut.



Anti-Burn-In Technology

Using technology that helps protect against burn-in to the panel, it greatly reduces the burn-in-image issue after long hours stay in the same image of the OLED monitors.

