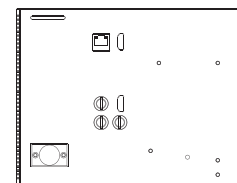
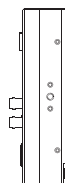
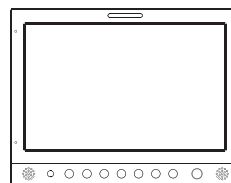


**9" FHD LCD MONITOR**

KVM-0960W, a portable 9inch monitor with 1920x1200 FHD resolution. Integrated 3D LUT color calibration technology, Built-in waveform, false color, focus assist etc features, makes it a nice choice for shooting and more applications.

**Accessory**Power Adaptor  
(Standard)V-mount Battery Plate  
(Optional)Magic Arm  
(Optional)**Main Body****Specifications**

- 9 inch 1920x1200 resolution
- 2 x 3G/HD/SD-SDI inputs
- Supports 4:4:4 SMPTE425-AB signal
- 1 x 3G/HD/SD-SDI output, 1 x HDMI input & output
- 1 x Video input (share with SDI1 input BNC)
- Support user 3D LUT files import
- Waveform, False Color, Focus Assist, Zebra
- Aspect Ratio, Safe & Area Marker, UMD
- Time Code, Blue/Mono Only
- Darkness Check, Video Freeze, Fast Mode
- Picture Flip, PIP/PBP
- 16CH SDI & 2CH HDMI embedded audio
- Dynamic & Static UMD, IMD Tally Display (TSL V3.1/4.0)
- 3.5mm headset jack, Tally Indicator
- Aluminum Alloy Casing

**LCD Panel**

|                |                      |
|----------------|----------------------|
| Model No.      | KVM-0960W            |
| Backlight      | LED                  |
| Size           | 9"                   |
| Resolution     | 1920×1200            |
| Aspect Ratio   | 16 : 10              |
| Viewing Angle  | 170°(H) / 170°(V)    |
| Color Depth    | 16.7M                |
| Brightness     | 450cd/m <sup>2</sup> |
| Contrast Ratio | 800:1                |

**Input**

|          |  |
|----------|--|
| 2 x BNC  | SDI 1/2 signal inputs<br><i>(Auto-detected and compatible to 3G/HD/SD-SDI)</i> |
| 1 x BNC  | Composite Video input<br><i>(Share with SDI 1 input BNC)</i>                   |
| 1 x HDMI | HDMI input   |

**Output**

|          |  |
|----------|--|
| 1 x BNC  | SDI signal output<br><i>(3G/HD/SD-SDI auto-detected)</i> |
| 1 x HDMI | HDMI output  |

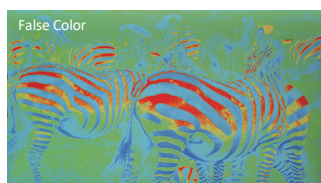
## Darkness Check

Increasing the brightness and contrast ratio in the dark areas, Darkness Check can show more shadow details of the input signal. Darkness Check can be used for double checking the shadow detail of the dark areas to avoid any missing information.



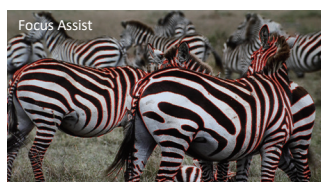
## False Color

Check exposure of the image. Blue, cyan, green, yellow, orange and red color be displayed in turn to show the luminance or brightness values of the image from darkest to brightest, enables an achievement of proper exposure without applying external test equipment.



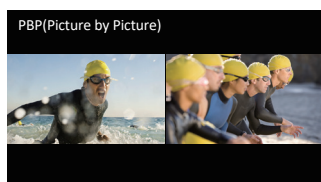
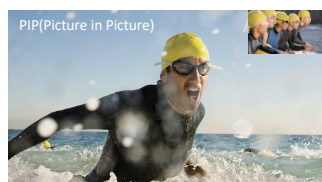
## Focus Assist

Focus assist aids the camera operator in obtaining the sharpest possible picture, it will mark with red color where the sharp edges appear on the screen.



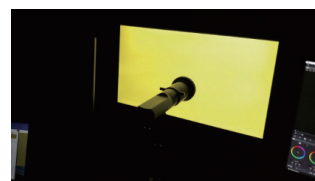
## PIP & PBP

It supports PIP and PBP for one SDI signal with the other signal (Video/ Component/ HDMI/ DVI/ VGA). The two images can swap freely between each other.



## 3D LUT Color Calibration

Compatible with ColourSpace and Calman calibration software, Konvision monitors apply K10-A probe (professional level) to achieve a precise color. Monitor's also workable with universal colorimeters including CA210, CA310, CS200, CR100, CR250, X-Rite i1 Display.



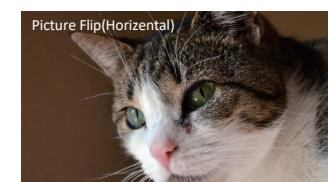
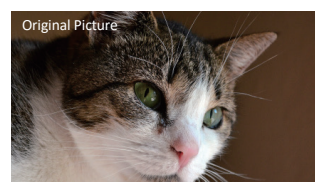
## 3D LUT files import

With the LUT loading function, users can load 2 different 3D LUT files with different color types according to their own needs, making DIT, post production and grading work simpler and more intuitive, optimizing the work flow and improving work efficiency.



## Picture Flip

Horizontal picture flip function allows negative image, is very useful in the studios/ virtual studios, such as weather forecast, news and other programs, etc.



## Zebra

Display the overexposed areas (too bright) of the image with zebra stripes, aids the camera operator to control the luminance, in order to avoid overexposure. This feature is very effective for proper exposure.



| Audio In & Out       |  |
|----------------------|--|
| SDI/HDMI Audio In    | 16 Channels SDI/2 Channels HDMI embedded audio |
| Audio Meter Display  | Vertical/Horizontal audio level meter display  |
| Audio Headset Output | 3.5mm headset jack                             |
| Built-in Speaker     | 2.0W×2   |

| GENERAL           |   |
|-------------------|---|
| Input Voltage     | DC 8.4 V - 16.8 V   |
| Power Consumption | 18 W  |
| Power-Saving Mode | Turn off unimportant key automatically if no signal input |
| Accessory         | Power adaptor   |

▣ Specifications may be changed without prior notice.