



Native 4K Resolution



High Dynamic Range



P3 Gamut 100% Coverage

### 31" 4K HDR P3 MASTER MONITOR

KXM-3110D is a 31" ture 4K HDR master monitor with dual layer LCD panel which offers 1000 Nits ultra high brightness and 1,000,000:1 contrast ratio. HDR display supports PQ and HLG. Equipped with 2x12G/6G/3G/HD/SD-SDI inputs and outputs, it is ideal for 4K quality-demanding studio, color grading, and production.



12G-SDI



BT.2020



Waveform



VectorScope



Focus Assist



Audio Meter



False Color



Zebra



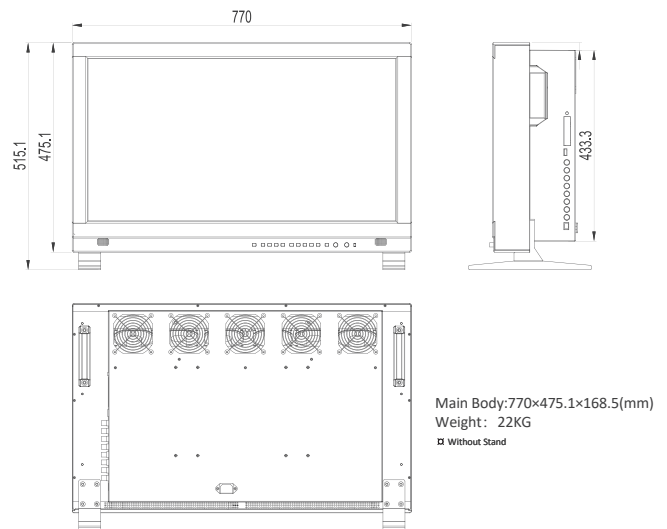
TSL UMD



GPI

| LCD Panel      |  |
|----------------|--|
| Model No.      | KXM-3110D  |
| Backlight      | LED,100% P3  |
| Size           | 31"  |
| Resolution     | 4096x2160  |
| Aspect Ratio   | 17 : 9   |
| Viewing Angle  | 178°(H) / 178°(V)  |
| Color Depth    | 1.07B  |
| Brightness     | 1000 cd/m <sup>2</sup>   |
| Contrast Ratio | 1,000,000:1  |
| Input          |  |
| 2x BNC         | 12G-SDI 1/2 signal inputs<br><i>(Auto-detected and compatible to 6G/3G/HD/SD-SDI)</i>  |
| 2x BNC         | 3G-SDI 1/2 signal inputs<br><i>(3G/HD/SD-SDI auto detected)</i>                        |
| 1 x SDI SFP    | SDI SFP input cage   |
| 1 x HDMI 2.0   | HDMI 2.0 Signal  |
| Output         |  |
| 2 x BNC        | 12G-SDI 1/2 signal outputs<br><i>(Auto-detected and compatible to 6G/3G/HD/SD-SDI)</i> |
| 2 x BNC        | 3G-SDI 1/2 signal outputs<br><i>(3G/HD/SD-SDI auto detected)</i>                       |

### Main Body Dimensions



### Specifications

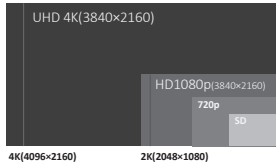
- 4096x2160 4K resolution,10Bit LCD panel
- 1000 Nits high brightness and 1,000,000:1 contrast ratio
- 12 Bit Video Processing,image no delay
- 2x12G-SDI inputs and outputs(6G/3G/HD/SD-SDI auto detect)
- 12G-SDI single link 4K SDI signal supports 4096x2160 60P
- 1xHDMI2.0 input, 1xSDI SFP module optical input cage
- 4K/HD signal support Payload ID function
- 4K Mode,Quad-Split Mode,FHD single picture mode
- Quad-View: 4x SDI/HDMI formats mixed inputs with different frequency rate
- 4K signal supports 2 Sample Interleave (2SI) and Square Division (SQD)
- HDR supports PQ (ST2084) , HLG(1.0,1.1, 1.2, 1.3, 1.4, 1.5)
- SDR and HDR comparison
- Ethernet Remote control
- Dynamic UMD(TSL3.1/4.0)

- 3D LUT Color calibration with LightSpace & CalMAN
- Support user 3D LUT files import
- Color space: REC709/EBU/DCI-P3 D65/DCI-P3/REC2020/ USER1/USER2/Bypass
- Various Gamma selection: Gamma 2.0, 2.2, 2.4, 2.6
- Various cameras' SDR Log curves: SONY S-log1/2/3 (709), ARRI Log-C (709), Canon C-log1/2/3(709) etc
- Various cameras' HDR Log curves:SONY S-log1/2/3 (HLG), S-log1/2/3 (PQ), ARRI Log-C (HLG), Log-C (PQ)
- 4K HDR Waveform, Vectorscope, Black Stretch
- Picture Flip, Focus Assist
- False Color, Zebra
- Scan, Markers
- Blue/Mono Only
- Audio Level Meter

# Main Features

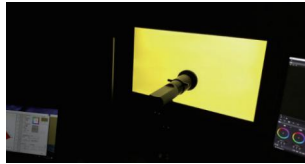
## - 4K Signal, Native 4K Resolution

Native 4K resolution, 4K 12G-SDI signal link supports utmost 4096 x 2160 60P format, 2 x 12G-SDI signal inputs and outputs (auto detected 6G/3G/HD/SD-SDI) ,1xHDMI.2.0 input, 1xSDI SFP module input cage.



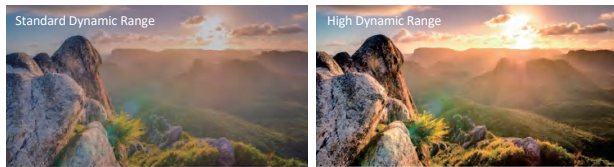
## - 3D LUT Color Calibration

Compatible with Lightspace and Calman calibration software, Konvision monitors apply K10-A probe (professional level) to achieve a precise color. Monitor's also workable with universal colorimeters including CA210, CA310, CS200, CR100, CR250, X-Rite i1 Display.



## - High Dynamic Range(HDR)

Konvision KUM 4K, 8K and KVM-6X series support HDR display. Adjustable HDR modes include PQ(ST2084), HLG with Rec 2020 color gamut. It reproduces a greater dynamic range of luminosity and provides extremely high level picture quality and image reproduction.



## - SQD and 2SI 4K signal

4K 2 Sample Interleave (2SI) : Pixel based segmentation



4K Square Division (SQD) : Quadrant based segmentation



## - Quad View Mode

You can input 4x independent SDI sources or 3x independent SDI sources and 1x HDMI source to quadview, support different SDI or HDMI format mixed inputs with different frequency rate.



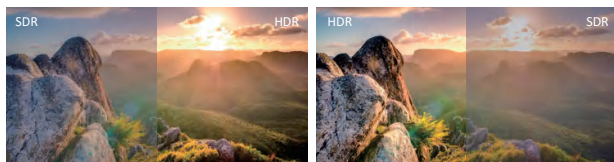
## - EOTF Curve Conversions

Konvision KUM 4K, 8K and KVM-6X series supports a variety of EOTF curve conversion applicable to the broadcast industry and digital film standard. A preset of lots of HDR log, SDR logs and gamma curve selection, so as to realize the perfect combination with the camera system.



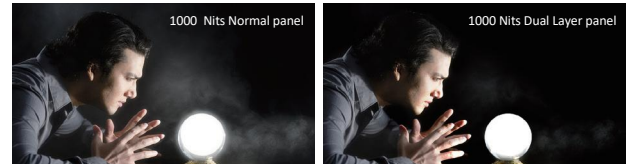
## - HDR & SDR Comparison

Konvision 8K and 4K monitors offer HDR & SDR side by side comparison. This function allows customers to compare the difference between HDR and SDR on the same screen. It allows users to see more picture details and color in scene.



## - Dual Layer Panel with 1000 Nits Brightness

Highest industry standard dual layer LCD panel with 1000 Nits high brightness, deep black, no halo, no glare distortion.



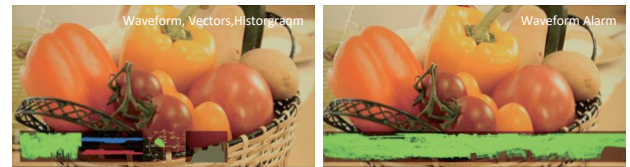
## - Black Stretch

Increasing the brightness and contrast ratio in the dark areas, Black Stretch function can show more shadow details of the input signal. Black Stretch can be used for double checking the shadow detail of the dark areas to avoid any missing information.



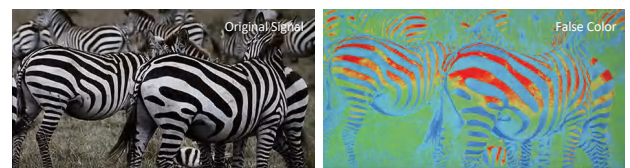
## - 4K HDR Waveform (Alarm), Vectors

4K HDR Waveform. Both SDI and HDMI support Waveform, Vectorscope, Histogram and manage to be displayed on screen at the same time. When luminance reaches or exceeds the preset value, the over exposure areas will be red marked (Waveform Alarm).



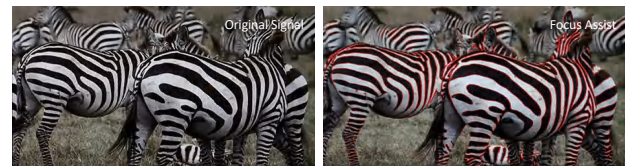
## - False Color

Check exposure of the image. Blue, cyan, green, yellow, orange and red color be displayed in turn to show the luminance or brightness values of the image from darkest to brightest, enables an achievement of proper exposure without applying external test equipment.



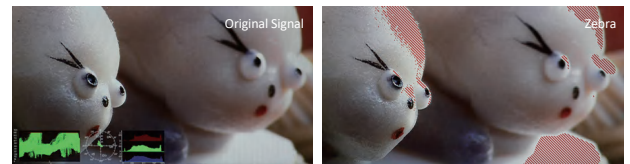
## - Focus Assist

Focus assist aids the camera operator in obtaining the sharpest possible picture, it will mark with red color where the sharp edges appear on the screen.



## - Zebra

Display the overexposed areas (too bright) of the image with zebra stripes, aids the camera operator to control the luminance, in order to avoid overexposure. This feature is very effective for proper exposure.



| Audio In & Out       |  |
|----------------------|--|
| SDI/HDMI Audio In    | 16 Channels SDI/2 Channels HDMI embedded audio |
| Audio Meter Display  | Vertical/Horizontal audio level meter display  |
| Audio Headset Output | 3.5mm headset jack                             |
| Built-in Speaker     | 2.5Wx2   |
| GENERAL              |  |
| Input Voltage        | AC 100-240V 50/60Hz                            |
| Power Consumption    | 330W   |
| VESA Installation    | VESA MIS-D (200x200mm)                         |
| Accessory            | Power Cord / Desktop stand                     |

Specifications may be changed without prior notice.