

MV-1804

18x4 Baseband Signal MultiViewer Excellent image quality, easy operation



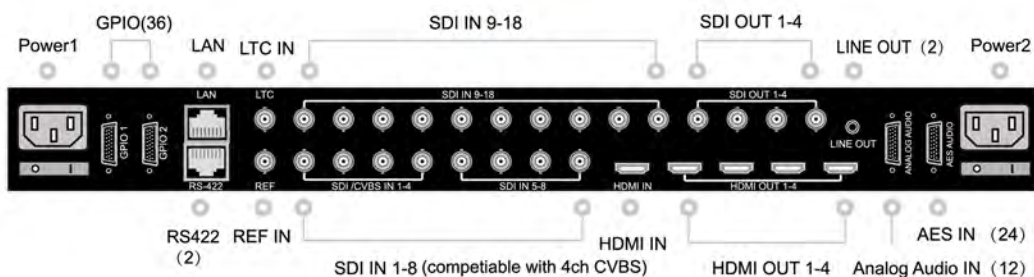
Product Overview >>>

MV-1804 is a high quality, top level multiviewer that tailored for professional broadcasting field, equipped with 18CH 3G/HD/SD-SDI auto selected inputs(4-channels compatible with CVBS), 1CH HDMI input, 4CH SDI and 4CH HDMI simultaneous outputs.

With superior layout flexibility, MV-1804 is capable of unlimited image scaling and repetition across all displays. It provides rich on-screen graphics, supports fast signal switching, one-click full screen, TSL protocol, dynamic UMD and Tally automatically following, to meet the most critical monitoring applications and high-end TV production requirements.

Leading video processing algorithms brings superior picture quality, ensuring video source true representation, real-time signal alarming detection brings customers superior experience, comprehensive protecting mechanism brings production stability.

MV-1804 always provide the most reliable core signal monitoring device and the highest quality display, excellent choice for studio, OB truck and broadcast room etc.



*SDI and HDMI outputs share the same contents

Quad-Link 4K Output

>>>

- Support native 4ch HDMI and 4ch 3G-SDI outputs
- 4ch outputs can be spliced into 4K(3840×2160) resolution display
- Any input signals can be full-screen zoomed to 4K(3840×2160) resolution display



3840 x 2160

Top-level video processing algorithms

>>>

Based on advanced motion compensation deinterlacing technology, MV-1804 achieves amazing video scaling quality. In the experimental environment, when the video source is scaled to less than 6.25% of the original size, the output remains clear and sharp, no shaking and flash, and arc edge remains evenly, smooth, no jagged.



Video processed by MV-1804 gets highly color reproduction and smoothly edge

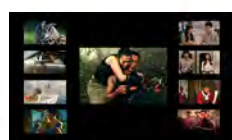


While video processed by normal calculation method has an obvious color differ, saw tooth even too much noise

Creative Fill + Key mode for ESP and EFP

>>>

- 4 SDI outputs can be configed to 2 sets of Fill+Key outputs
- 18 different video "windows" can be feed to downstream key input of production switcher



Fill



Key



Switcher





Superior layout flexibility ,rich on-screen graphics

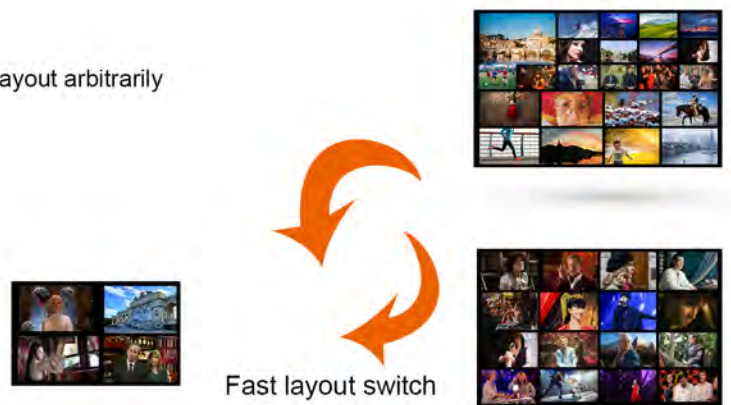
- Video window, volume meter, UMD and other display elements layout arbitrarily
- Fast layout switching with preset templates
- Quickly switch signal source in display window
- Unlimited signal repetition across all screens
- NTP, LTC automatic calibration
- Capable of displaying AFD, embedded SDI LTC and standard input signals

Safe and stable system architecture

- Standard 1RU equipment with redundant AC power modules
- Based on highly reliable industrial design
- Ultra-low power consumption, ultra-quiet, ultra-fast boot

Accurate signal probing and alarming

- Supports black screen, freeze screen, audio volume and mute detection alarm
- Supports power, temperature and other abnormal state alarm
- Supports multicolor text and borders on-screen alarm displays for clear operator alerts. GPO can be used to trigger an external devices



Fast layout switch



Specifications >>>

Connections	SDI Input	HDMI Input
	18 x 10bit 3G/HD/SD-SDI, BNC	1 x HDMI, HDMI Type A
	1-4 inputs are also auto-sensing for CVBS	HDMI IN/ SDI IN 8 alternatives
	8 channels embedded in 3G/HD/SD-SDI	8 channels embedded in 3G/HD/SD-SDI
	AES/EBU Audio Input	Analog Audio Input
	24 channels, DB26	12 channels unbalanced, DB26
	HDMI Output	SDI Output
	4 x HDMI, HDMI Type A	4 x 10bit 3G/HD-SDI, BNC
	4K Quad-Link HDMI output (4 Channels)	4K Quad-Link SDI output (4 Channels)
	HDMI output the same content with SDI	SDI output the same content with HDMI
	Analog Audio Output	Analog Audio Output HDMI and SDI Audio Output
	1 x 3.5mm connector for stereo audio Line output	2 channels embedded audio output per HDMI output
	1 x 3.5mm connector for stereo audio Headphone output	2 channels embedded audio output per SDI output
	REF In	LTC In
Bi-Level or Tri-Level sync, BNC	1 x LTC In, BNC	
GPI/O	RS422	
36 channels GPI/O, 2 x DB26	2 x RS422, RJ-45	
Ethernet Port	Power	
100/1000BASE-TX, RJ-45	Redundant power, 110~240V, 50~60HZ	
USB Interface		
	2 x USB, Reserved	
Formats	HD Input Formats	SD Input Formats
	1920 x 1080/50i, 1920 x 1080/59.94i, 1920 x 1080/60i	720 x 576/50i
	1920 x 1080/23.98p, 1920 x 1080/24p, 1920 x 1080/25p	720 x 480/59.94i
	1920 x 1080/29.97p, 1920 x 1080/30p, 1280 x 720/50p	
	1280 x 720/59.94p, 1280 x 720/60p, 1920 x 1080/50p	
	1920 x 1080/59.94p, 1920 x 1080/60p	
	HDMI Output Formats	SDI Output Formats
	Single-Channel Support:	Single-Channel Support:
	1920 x 1080/50p, 1920 x 1080/59.94p	1920 x 1080/50i, 1920 x 1080/59.94i, 1920 x 1080/50p
	Spliced Resolution:	1920 x 1080/59.94p
3840 x 1080, 1920 x 2160, 3840 x 2160	Spliced Resolution:	
7680 x 1080, 1920 x 4320	3840 x 1080, 1920 x 2160, 3840 x 2160	
7680 x 1080, 1920 x 4320	3840 x 1080, 1920 x 2160, 3840 x 2160	
	7680 x 1080, 1920 x 4320	
Processing	Supports rich of display elements, dynamic UMD, a variety of Tally form, the latest version of TSL protocol, SNMP protocol Supports alarm detection for signal lost, black, freeze, mute and high volume	
Control	Windows-based control software, user can easily design layout templates Supports fast switching of signal source, fast switching layout template, instant full screen display	
Model	MV-1804	18 SDI inputs, 4 HDMI outputs, 4 SDI outputs