

Specifications

- 1920 x 1200 FHD resolution, IPS LCD panel
- 12Bit video processing
- 3D LUT color calibrated
- 1x3G/HD-SDI and out for each screen
- Composite Video/HDMI input
- Waveform, Vector scope
- Markers Time Code
- Scan. Blue Only/Mono
- Audio Meter, UMD
- Built-in DC in and AC in
- Ethernet
- Tally

LCD Panel	
Model No.	KRM-902A
Backlight	LED
Size	2x9"
Resolution	1920x1200
Aspect Ratio	16 : 10
Viewing Angle	170°(H)/170°(V)
Color Depth	16.7M
Brightness	500cd/m ²
Contrast Ratio	800:1
Input (Each screen)	
1 x BNC	3G SDI signal inputs <small>(Auto-detected and compatible to 3G/HD/SD-SDI)</small>
1 x BNC	Video signal input
1 x HDMI	HDMI input
Output (Each screen)	
1 x BNC	3G SDI signal output <small>(Auto-detected and compatible to 3G/HD/SD-SDI)</small>
Audio In & Out	
SDI Audio In	8 Channels Embedded Audio
Audio Meter Display	Vertical/Horizontal audio level meter display
Audio Headset Output	3.5mm headset jack
Built-in Speaker	2.5W×2
General	
Input Voltage	DC 12V and AC 100-240V 50/60Hz
Power Consumption	26 W
VESA Installation	19" EIA Rack 4RU
Accessory	Power Cord /Rackmount Brackets

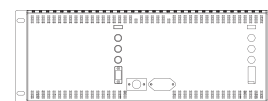
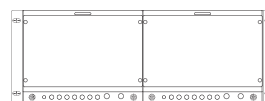
□ Specifications may be changed without prior notice.

2x9" 3G-SDI FHD DUAL RACK LCD MONITOR

KRM-902A, 2x9" 4RU dual rack-mount monitor, IPS LCD panels with FHD 1920x1200 resolution, wide viewing angle. 3D LUT color calibrated, support waveform, vector scope and audio meter display make it suitable for OB trucks and studios.



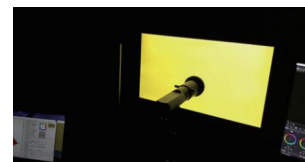
Main Body



Main features

- 3D LUT Color Calibration

Compatible with Lightspace and Calman calibration software, Konvision monitors apply K10-A probe (professional level) to achieve a precise color. Monitor's also workable with universal colorimeters including CA210, CA310, CS200, CR100, CR250, X-Rite i1 Display.

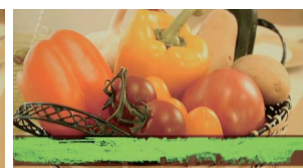
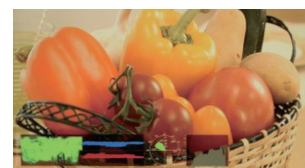


Calibration Softwares:



- Waveform(Alarm), Vectors

Support Waveform, Vector scope, and manage to be displayed on screen at the same time. When luminance reaches or exceeds the preset value, the over exposure areas will be red marked (Waveform Alarm).



- Precise Color Reproduction

Konvision monitors support the color space of HD (Rec.709) and UHD (BT.2020) comply with the ITU standard and support the DCI-P3 color gamut of digital cinema to ensure accurate color reproduction and color calibration.

