



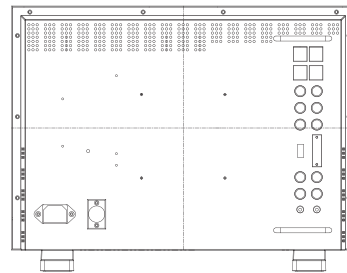
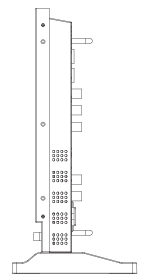
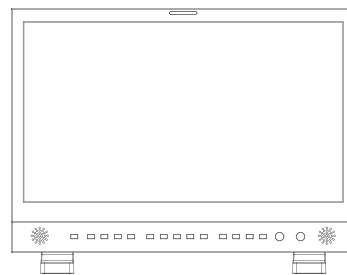
**17.3" FHD BROADCAST MONITOR**

KVM-1753W is a 17.3inch multi-functional monitor that supports full video formats. It provides with waveform, vector scope, audio meter and more professional broadcast features. Built-in AC in and DC in power suppliers and efficient features makes it a nice choice for post-production, editing applications.



LCD Panel	
Model No.	KVM-1753W
Backlight	LED
Size	17.3"
Resolution	1920x1080
Aspect Ratio	16 : 9
Viewing Angle	178°(H) / 178°(V)
Color Depth	16.7M
Brightness	300cd/m <sup>2</sup>
Contrast Ratio	700:1
Input	
2 x BNC	SDI 1/2 signal inputs <i>(Auto-detected and compatible to 3G/HD/SD-SDI)</i>
3 x BNC	YPbPr/Video/Y/C inputs
1 x HDMI	HDMI input
1 x DVI-I	DVI/VGA inputs
Output	
2 x BNC	SDI 1/2 signal outputs <i>(Auto-detected and compatible to 3G/HD/SD-SDI)</i>
3 x BNC	YPbPr/Video/Y/C outputs

**Main Body**



**Specifications**

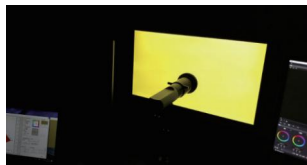
- 1920x1080 resolution, 8 Bit LCD panel
- 12 Bit Video Processing, image no delay
- 3G-SDI 4:4:4 12bit signals (SMPTE 425M A/B)
- 2x2K/3G-SDI inputs and outputs(2K/3G/HD/SD-SDI auto detect)
- 1x DVI-D input,1x HDMI input, 1x composite video input
- Part Zoom In
- Black Stretch function
- H/V Delay, Over Scan, Markers
- Audio Level Meter, Blue/Mono Only
- Remote control: Ethernet/GPI, RS422 In/Out
- Dynamic UMD(TSL3.1/4.0), Time Code Display

- LED Tally Light and On-screen Tally display
- F-key configuration and Key Lock function
- Built-in AC in and DC in power supply
- 3D LUT Color calibration with LightSpace & CalMAN
- Waveform, Vectorscope for SDI1 and SDI2
- Waveform, Vectorscope for HDMI/DVI
- Pixel Measurement and Audio Phase
- PBP/PIP(size/position adjustable)
- Picture Flip, Focus Assist
- False Color
- Zebra

# Main Features

## - 3D LUT Color Calibration

Compatible with Lightspace and Calman calibration software, Konvision monitors apply K10-A probe (professional level) to achieve a precise color. Monitor's also workable with universal colorimeters including CA210, CA310, CS200, CR100, CR250, X-Rite i1 Display.



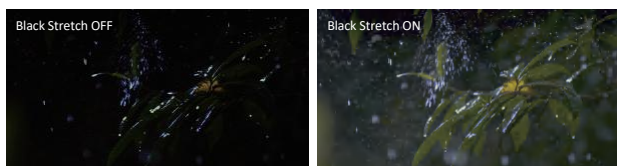
## - Waveform(Alarm), Vectors

Both SDI and HDMI support Waveform, Vectorscope, Histogram and manage to be displayed on screen at the same time. When luminance reaches or exceeds the preset value, the over exposure areas will be red marked (Waveform Alarm).



## - Black Stretch

Increasing the brightness and contrast ratio in the dark areas, Black Stretch function can show more shadow details of the input signal. Black Stretch can be used for double checking the shadow detail of the dark areas to avoid any missing information.



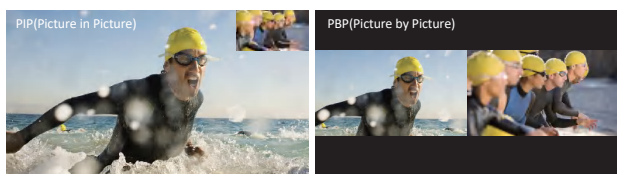
## - Part Zoom In

Part Zoom in function allows user Zoom In any part of the picture, to watch picture details more clearly, and assist for focus.



## - PIP & PBP

Images of two SDI signals manage to display on screen at the same time. It also supports PIP and PBP for one SDI signal with the other signal (Video/Component/HDMI/DVI/VGA). The two images can swap freely between each other.



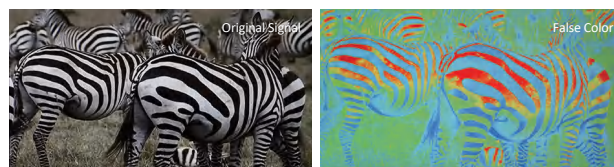
## - Picture Flip

Horizontal picture flip function allows negative image, is very useful in the studios/virtual studios, such as weather forecast, news and other programs, etc.



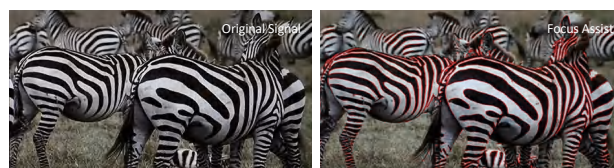
## - False Color

Check exposure of the image. Blue, cyan, green, yellow, orange and red color be displayed in turn to show the luminance or brightness values of the image from darkest to brightest, enables an achievement of proper exposure without applying external test equipment.



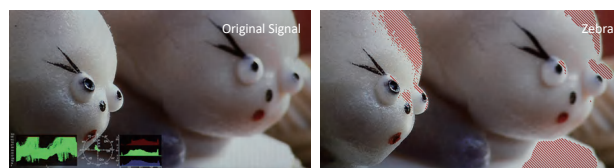
## - Focus Assist

Focus assist aids the camera operator in obtaining the sharpest possible picture, it will mark with red color where the sharp edges appear on the screen.



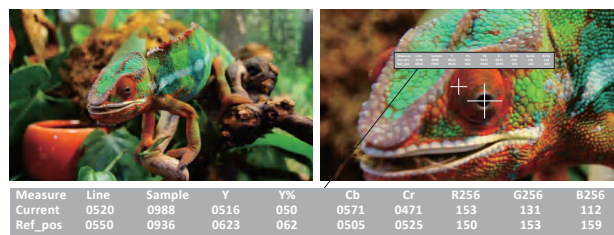
## - Zebra

Display the overexposed areas (too bright) of the image with zebra stripes, aids the camera operator to control the luminance, in order to avoid overexposure. This feature is very effective for proper exposure.



## - Pixel Measurement

Select any single pixel or block of pixels by using a movable cross-hair to obtain real time readouts of the Y&RGB values of the selected position. This function is to get real time Y&RGB measurement values of any point of the input signals and compare the values of any two points.



## Audio In & Out

SDI/HDMI Audio In	16 Channels SDI/2 Channels HDMI embedded audio
Audio Meter Display	Vertical/Horizontal audio level meter display
Audio Headset Output	3.5mm headset jack
Built-in Speaker	2.5W x 2

## GENERAL

Input Voltage	DC 12V and AC 100-240V 50/60Hz
Power Consumption	26 W
Power-Saving Mode	Turn off unimportant key automatically if no signal input
VESA Installation	VESA MIS-D (100x100mm)
Accessory	Power Cord /Desktop stand

⚠ Specifications may be changed without prior notice.