



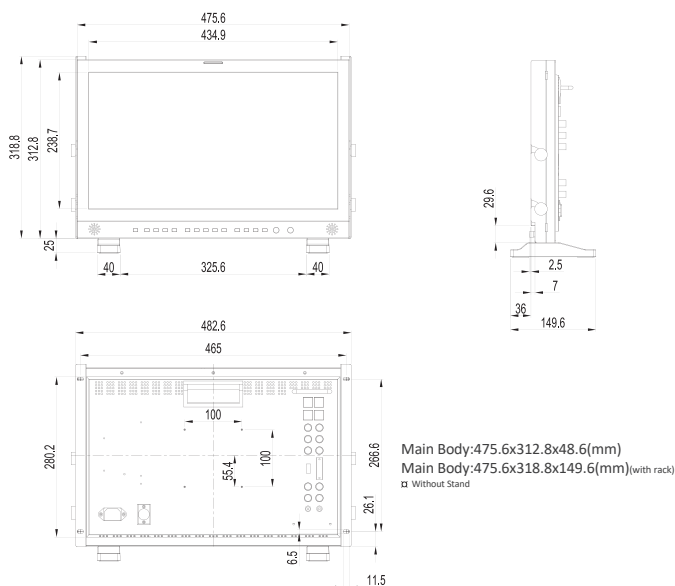
18.5" BROADCAST LCD MONITOR

KVM-1950W is a multi-functional 18.5inch monitor, supports full video formats includes 2K and 3Gbs SDI 4:4:412 Bit signals. Efficient features make it a nice choice for production, post-production and editing, as well as studio and OB truck.



| LCD Panel | |
|----------------|---|
| Model No. | KVM-1950W |
| Backlight | LCD |
| Size | 18.5" |
| Resolution | 1366×768 |
| Aspect Ratio | 16 : 9 |
| Viewing Angle | 178°(H) / 178°(V) |
| Color Depth | 16.7M |
| Brightness | 350cd/m ² |
| Contrast Ratio | 1000:1 |
| Lifetime | ≥50000 hours |
| Input | |
| 2 x BNC | SDI 1/2 signal inputs <i>(Auto-detected and compatible to 3G/HD/SD-SDI)</i> |
| 3 x BNC | YPbPr/Video/Y/C inputs |
| 1 x HDMI | HDMI input |
| 1 x DVI-I | DVI/VGA inputs |
| Output | |
| 2 x BNC | SDI 1/2 signal outputs <i>(Auto-detected and compatible to 3G/HD/SD-SDI)</i> |
| 3 x BNC | YPbPr/Video/Y/C outputs |

Main Body



Specifications

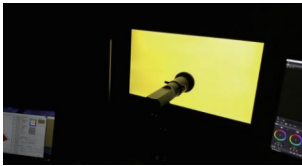
- 18.5" 1366×768 native resolution
- IPS LCD Panel
- 12Bit video processing
- 30 LUT color calibrated in factory
- 3G-SDI 4:4:4 12Bit signals (SMPTE 425M A/B)
- 2x2K/3G/HD-SDI in/out
- Composite/Component in/out
- PIP/PBP (size/position adjustable)
- Wide type/Waveform (waveform alarm)
- Waveform, Vector scope, Audio Meter for SDI1, SDI2, HDMI
- Histogram, Pixel Measurement

- Picture Flip, H/V Delay
- Focus Assist. Zoom
- False Color, Zebra
- Scan, Marker, Blue Only/Mono
- Audio Phase, Time Code
- Audio Meter (16ch SDI, 2ch HDMI)
- Dynamic UMD (TSL3.1 /4.0)
- Built-in DC IN /AC IN
- Power-off Memory
- Ethernet/GPI
- RS422 in/out

Main Features

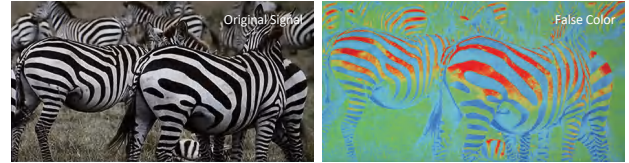
- 3D LUT Color Calibration

Compatible with Lightspace and Calman calibration software, Konvision monitors apply K10-A probe (professional level) to achieve a precise color. Monitor's also workable with universal colorimeters including CA210, CA310, CS200, CR100, CR250, X-Rite i1 Display.



- False Color

Check exposure of the image. Blue, cyan, green, yellow, orange and red color be displayed in turn to show the luminance or brightness values of the image from darkest to brightest, enables an achievement of proper exposure without applying external test equipment.



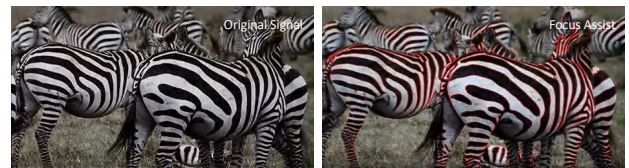
- Waveform(Alarm), Vectors

Both SDI and HDMI support Waveform, Vectorscope, Histogram and manage to be displayed on screen at the same time. When luminance reaches or exceeds the preset value, the over exposure areas will be red marked (Waveform Alarm).



- Focus Assist

Focus assist aids the camera operator in obtaining the sharpest possible picture, it will mark with red color where the sharp edges appear on the screen.



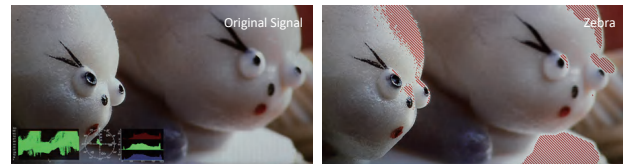
- Part Zoom In

Part Zoom In function allows user Zoom In any part of the picture, to watch picture details more clearly, and assist for focus.



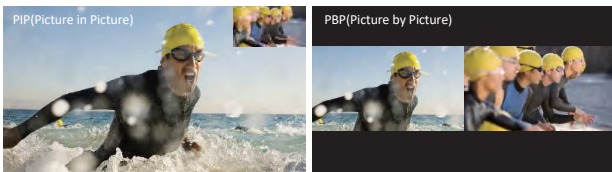
- Zebra

Display the overexposed areas (too bright) of the image with zebra stripes, aids the camera operator to control the luminance, in order to avoid overexposure. This feature is very effective for proper exposure.



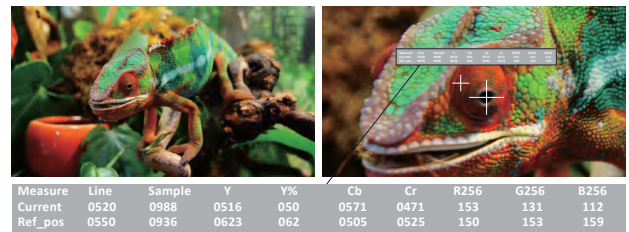
- PIP & PBP

Images of two SDI signals manage to display on screen at the same time. It also supports PIP and PBP for one SDI signal with the other signal (Video/Component/HDMI/DVI/VGA). The two images can swap freely between each other.



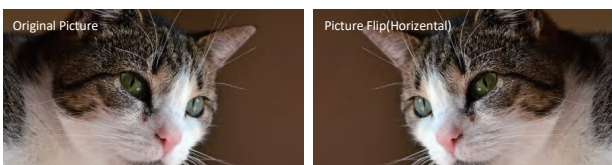
- Pixel Measurement

Select any single pixel or block of pixels by using a movable cross-hair to obtain real time readouts of the Y&RGB values of the selected position. This function is to get real time Y&RGB measurement values of any point of the input signals and compare the values of any two points.



- Picture Flip

Horizontal picture flip function allows negative image, is very useful in the studios/virtual studios, such as weather forecast, news and other programs, etc.



Audio In & Out

| | |
|----------------------|--|
| SDI/HDMI Audio In | 16 Channels SDI/2 Channels HDMI embedded audio |
| Audio Meter Display | Vertical/Horizontal audio level meter display |
| Audio Headset Output | 3.5mm headset jack |
| Built-in Speaker | 2.5W x 2 |

GENERAL

| | |
|-------------------|---|
| Input Voltage | DC 12V and AC 100-240V 50/60Hz |
| Power Consumption | 35 W |
| Power-Saving Mode | Turn off unimportant key automatically if no signal input |
| VESA Installation | VESA MIS-D (100x100mm) |
| Accessory | Power Cord /Desktop stand |

Specifications may be changed without prior notice.