



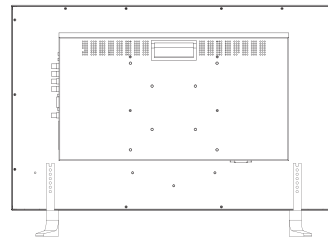
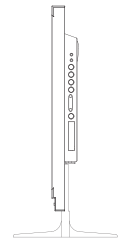
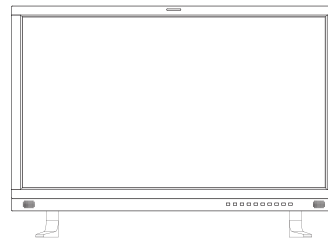
32" WALL-MOUNT BROADCAST MONITOR

KVM-3250W has equipped with FHD resolution IPS LCD panel, high brightness and contrast ratio, 2x3G-SDI inputs and outputs with waveform, vectors, pixel measurement and other full broadcast features, PIP and PBP enables two signals be displayed on screen in the same time. Super slim design offers excellent solution for studio, broadcast, video wall as well as high-end video conference applications.



LCD Panel	
Model No.	KVM-3250W
Backlight	LED
Size	32"
Resolution	1920x1080
Aspect Ratio	16 : 9
Viewing Angle	178°(H) / 178°(V)
Color Depth	16.7M
Brightness	360cd/m ²
Contrast Ratio	1400:1
Input	
2 x BNC	SDI 1/2 signal inputs <i>(Auto-detected and compatible to 3G/HD/SD-SDI)</i>
1 x BNC	Video input
1 x DVI-I	DVI/HDMI/VGA inputs
Output	
2 x BNC	SDI 1/2 signal outputs <i>(Auto-detected and compatible to 3G/HD/SD-SDI)</i>

Main Body



Specifications

- 32" 1920x1080 native resolution
- 12Bit video processing
- 3D LUT color calibration
- 3G-SDI 4:4:4 12Bit signals (SMPTE 425M A/B)
- 2x2K/3G/HD-SDI in/out
- Composite/Component in/out
- PIP/PBP
- Waveform, Vector scope, Histogram
- Audio Meter for SDI1, SDI2

- Pixel Measurement
- Picture Flip, H/V Delay
- Focus Assist, Zoom
- False Color, Zebra
- Scan, Marker, Blue Only/Mono
- Time Code, Audio Meter
- Power-off Memory
- Ethernet/GPI
- Optional buttons in the front or back

Main Features

- 3D LUT Color Calibration

Compatible with Lightspace and Calman calibration software, Konvision monitors apply K10-A probe (professional level) to achieve a precise color. Monitor's also workable with universal colorimeters including CA210, CA310, CS200, CR100, CR250, X-Rite i1 Display.

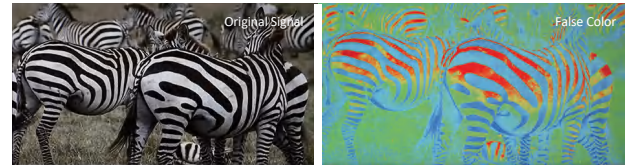


Calibration Softwares:



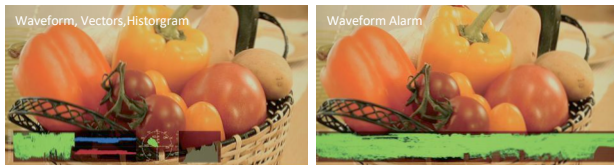
- False Color

Check exposure of the image. Blue, cyan, green, yellow, orange and red color be displayed in turn to show the luminance or brightness values of the image from darkest to brightest, enables an achievement of proper exposure without applying external test equipment.



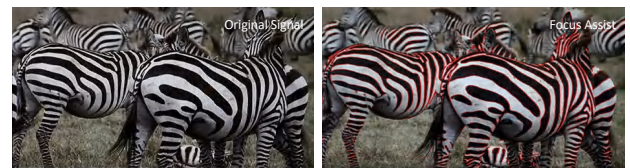
- Waveform(Alarm), Vectors

Both SDI and HDMI support Waveform, Vectorscope, Histogram and manage to be displayed on screen at the same time. When luminance reaches or exceeds the preset value, the over exposure areas will be red marked (Waveform Alarm).



- Focus Assist

Focus assist aids the camera operator in obtaining the sharpest possible picture, it will mark with red color where the sharp edges appear on the screen.



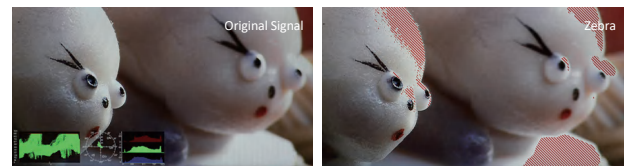
- Part Zoom In

Part Zoom in function allows user Zoom In any part of the picture, to watch picture details more clearly, and assist for focus.



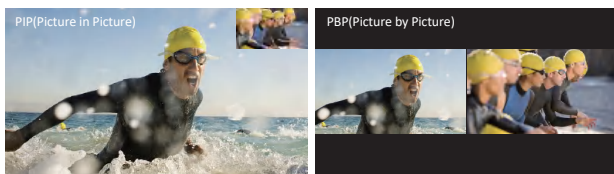
- Zebra

Display the overexposed areas (too bright) of the image with zebra stripes, aids the camera operator to control the luminance, in order to avoid overexposure. This feature is very effective for proper exposure.



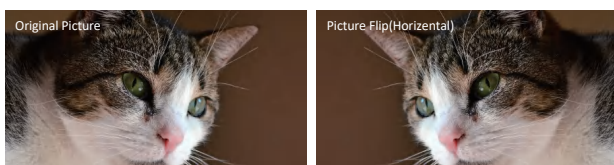
- PIP & PBP

Images of two SDI signals manage to display on screen at the same time. It also supports PIP and PBP for one SDI signal with the other signal (Video/Component/HDMI/DVI/VGA). The two images can swap freely between each other.



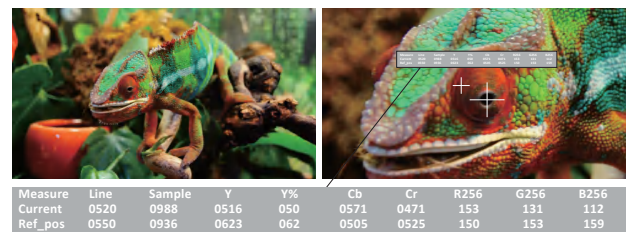
- Picture Flip

Horizontal picture flip function allows negative image, is very useful in the studios/virtual studios, such as weather forecast, news and other programs, etc.



- Pixel Measurement

Select any single pixel or block of pixels by using a movable cross-hair to obtain real time readouts of the Y&RGB values of the selected position. This function is to get real time Y&RGB measurement values of any point of the input signals and compare the values of of any two points.



Audio In & Out

SDI/HDMI Audio In	16 Channels SDI/2 Channels HDMI embedded audio
Audio Meter Display	Vertical/Horizontal audio level meter display
Audio Headset Output	3.5mm headset jack
Built-in Speaker	2.5W X 2

GENERAL

Input Voltage	AC 100-240V 50/60Hz
Power Consumption	80 W
Power-Saving Mode	Turn off unimportant key automatically if no signal input
VESA Installation	VESA MIS-D (200 X 200mm)
Accessory	Power Cord

Specifications may be changed without prior notice.